

# Absea Product datasheet

|                             |  |
|-----------------------------|--|
| <b>Product number</b>       | 118408A02  |
| <b>Antibody specificity</b> | Human kappa light chain protein (Bence Jones protein)          |
| <b>Species reactivity</b>   | Human  |
| <b>UniProt/GenelD</b>       | P01834/3514  |
| <b>Clone number</b>         | KT171  |
| <b>Immunogen</b>            | Native human kappa light chain protein                         |
| <b>Antibody isotype</b>     | Mouse IgG1   |
| <b>Antibody form</b>        | Intact antibody  |
| <b>Concentration</b>        | 1 mg/ml in PBS containing 0.09% sodium azide as a preservative |
| <b>Cross-reactivity</b>     | Not tested   |
| <b>Applications</b>         | Western blotting, capture antibody for sandwich ELISA.         |

These are applications that have been tested. It does not mean that the antibody cannot be used for other applications

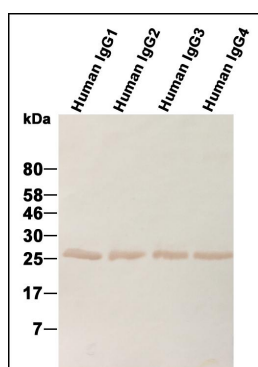


Figure 1. Western blotting using purified human IgG1, IgG2, IgG3 and IgG4

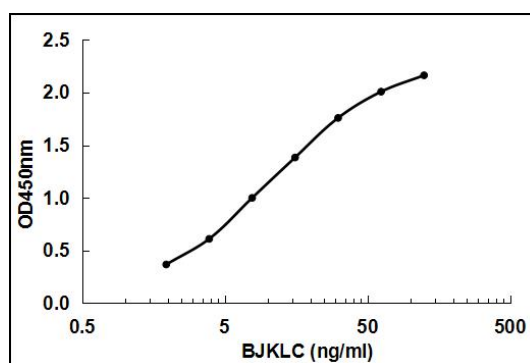


Figure2. Sandwich ELISA using KT171 as capture antibody and HRP conjugated KT172 as detection antibody

|   |   |
|---|---|
| <b>Suggested working concentrations</b> | Sandwich ELISA: 5 $\mu$ g/ml<br>Western blotting: 1 $\mu$ g/ml  |
|   | Optimal concentrations should be determined by the end user   |
| <b>Preparation</b>                      | IgG is purified through a Protein A column  |
| <b>Store</b>                            | 4 $^{\circ}$ C for 1 month, -20 $^{\circ}$ C or -80 $^{\circ}$ C for long term. Avoid repeated freeze/thaw cycles |
| <b>Safety information</b>               | This product contains sodium azide which is hazardous   |