

# Absea Product data sheet

<b>Product number</b>	116111C10
<b>Antibody specificity</b>	Ig kappa chain C region (mouse Ig $\kappa$ light chain)
<b>Species reactivity</b>	Mouse
<b>UniProt</b>	P01837
<b>Clone number</b>	KT128
<b>Immunogen</b>	Mouse IgG
<b>Antibody isotype</b>	Rat IgG2a
<b>Antibody form</b>	Intact antibody
<b>Concentration</b>	1 mg/ml in PBS containing 0.09% sodium azide as a preservative
<b>Cross-reactivity</b>	Not react with mouse Ig $\lambda$ light chain
<b>Applications</b>	ELISA, Western blotting, antibody isotyping

These are applications that have been tested. It does not mean that the antibody cannot be used for other applications

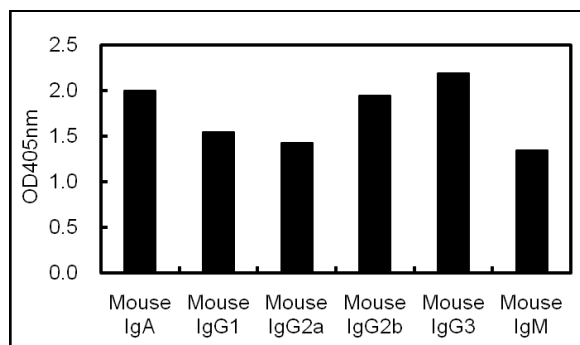


Figure 1. ELISA using plates coated with various mouse antibodies with kappa light chains. KT128 is used as primary antibody and peroxidase conjugated KT97 is used as secondary antibody.

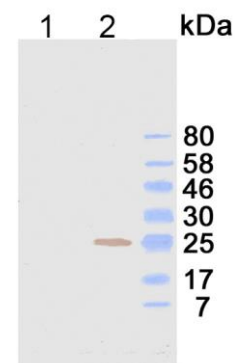


Figure 2. Western blotting using KT128. Lane 1. mouse antibody with  $\lambda$  light chain; Lane 2. mouse antibody with  $\kappa$  light chain. KT128 is used as primary antibody and peroxidase conjugated KT97 is used as secondary antibody.

<b>Suggested working concentrations</b>	ELISA: 1/1000 Western blotting: 1/500 – 1/10000  Optimal concentrations should be determined by the end user
<b>Preparation</b>	IgG is purified through a Protein G column
<b>Store</b>	4 °C for 1 month, -20 °C or -80°C in aliquots. Avoid repeated freeze/thaw cycles
<b>Safety information</b>	This product contains sodium azide which is hazardous