

Absea Product data sheet

Product number	031117E08
Antibody specificity	Kit ligand (SCF)
Species reactivity	Human
UniProt/GenelD	P21583/4254
Clone number	KT118
Immunogen	Recombinant soluble human Kit ligand
Antibody isotype	Rat IgG2a
Antibody form	Intact antibody
Concentration	1 mg/ml in PBS containing 0.09% sodium azide as a preservative
Cross-reactivity	Not tested
Applications	Primary antibody for ELISA; capture antibody for sandwich ELISA (paired with KT117/HRP)

These are applications that have been tested. It does not mean that the antibody cannot be used for other applications

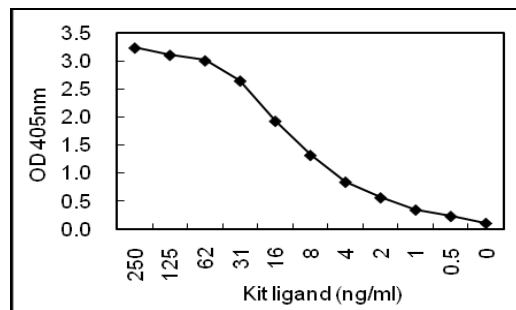


Figure 1. Sandwich ELISA using KT118 coated plate and HRP conjugated KT117.

Suggested working concentrations	ELISA: 1/1000 Sandwich ELISA: 5 µg/ml for coating plates Optimal concentrations should be determined by the end user
Preparation	IgG is purified through a Protein G column
Store	4 °C for 1 month, -20 °C or -80°C in aliquots. Avoid repeated freeze/thaw cycles
Safety information	This product contains sodium azide which is hazardous