

Absea Product data sheet

Product number	031101D11
Antibody specificity	Kit ligand (SCF)
Species reactivity	Human
UniProt/GenelD	P21583/4254
Clone number	KT117
Immunogen	Recombinant soluble human Kit ligand
Antibody isotype	Rat IgG2b
Antibody form	Intact antibody
Concentration	1 mg/ml in PBS containing 0.09% sodium azide as a preservative
Cross-reactivity	Not tested
Applications	Primary antibody for ELISA and Western blotting

These are applications that have been tested. It does not mean that the antibody cannot be used for other applications

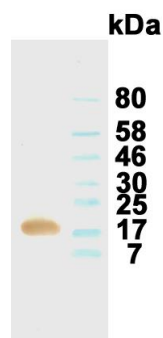


Figure 1. Western blotting result

Suggested working concentrations	ELISA: 1/1000 Western blotting: 1/500 – 1/5000 Optimal concentrations should be determined by the end user
Preparation	IgG is purified through a Protein A column
Store	4 °C for 1 month, -20 °C or -80°C in aliquots. Avoid repeated freeze/thaw cycles
Safety information	This product contains sodium azide which is hazardous