

Absea Product data sheet

Product number	011306D12
Antibody specificity	Growth hormone
Species reactivity	Human
UniProt/GenelD	P01241/2688
Clone number	KT19
Immunogen	Recombinant human growth hormone
Antibody isotype	Rat IgG1
Antibody form	Intact antibody
Concentration	1 mg/ml in PBS containing 0.09% sodium azide as a preservative
Cross-reactivity	Not tested
Applications	Primary antibody for ELISA; capture antibody for sandwich ELISA (paired with KT34/HRP)

These are applications that have been tested. It does not mean that the antibody cannot be used for other applications

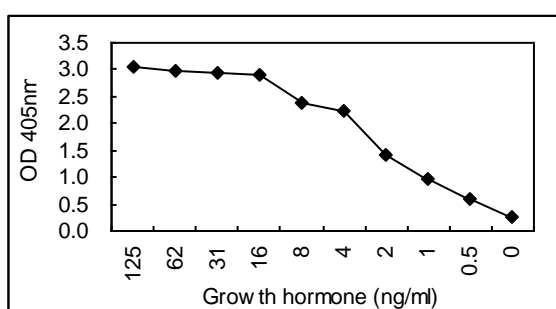


Figure 1. Sandwich ELISA using KT19 coated plate and HRP conjugated KT34.

Suggested working concentrations	ELISA: 1 µg/ml Sandwich ELISA: 5 µg/ml
Preparation	Antibody is purified from culture supernatant using a protein G column
Store	4 °C for 1 month, -20 °C or -80°C in aliquots. Avoid repeated freeze/thaw cycles
Safety information	This product contains sodium azide which is hazardous