

Absea Product data sheet

Product number	011003E09H
Antibody specificity	Ig kappa chain C region (Kappa light chain)
Species reactivity	Rat
Clone number	KT100
Immunogen	Rat IgG
Antibody isotype	Mouse IgG2b
Antibody form	Intact antibody labelled with horseradish peroxidase
Concentration	1 mg/ml in PBS containing 0.01% thimerosal as a preservative
Cross-reactivity	Not cross-react with mouse IgG
Applications	Detection antibody for ELISA and Western blotting

These are applications that have been tested. It does not mean that the antibody cannot be used for other applications

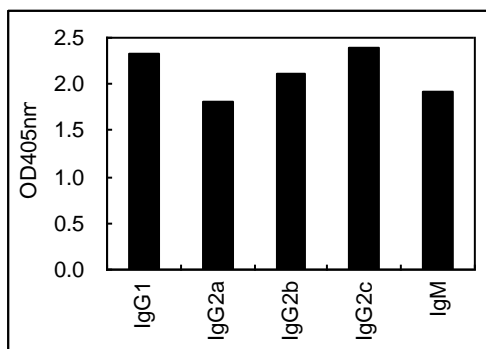


Figure 1. ELISA using rat immunoglobulins as primary antibodies and HRP conjugated KT100 as secondary antibody

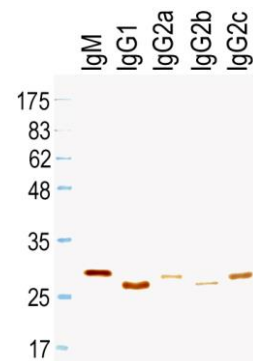


Figure 2. Western blotting to rat immunoglobulins under reducing condition detected by HRP conjugated KT100

Suggested working concentrations	ELISA: 1/3000 Western blotting: 1/500 – 1/10000 Optimal concentrations should be determined by the end user
Preparation	IgG is purified through a Protein A column and labelled with horseradish peroxidase
Store	4 °C for 1 month, -20 °C or -80°C in aliquots. Avoid repeated freeze/thaw cycles
Safety information	This product contains thimerosal which is hazardous