

# Absea Product data sheet

|                             |   |
|-----------------------------|---|
| <b>Product number</b>       | 010701G03H  |
| <b>Antibody specificity</b> | Granulocyte-macrophage colony-stimulating factor (GM-CSF)   |
| <b>Species reactivity</b>   | Human   |
| <b>UniProt/GenelD</b>       | P04141/1437   |
| <b>Clone number</b>         | KT35  |
| <b>Immunogen</b>            | Recombinant human GM-CSF  |
| <b>Antibody isotype</b>     | Rat IgG2a   |
| <b>Antibody form</b>        | Intact antibody labelled with horseradish peroxidase  |
| <b>Concentration</b>        | 1 mg/ml in PBS containing 0.01% thimerosal as a preservative                                      |
| <b>Cross-reactivity</b>     | Not tested  |
| <b>Applications</b>         | Detection Antibody for Western blotting; detection antibody for Sandwich ELISA (paired with KT37) |

These are applications that have been tested. It does not mean that the antibody cannot be used for other applications.

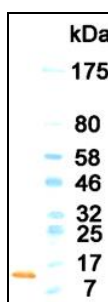


Figure 1. Western blotting result

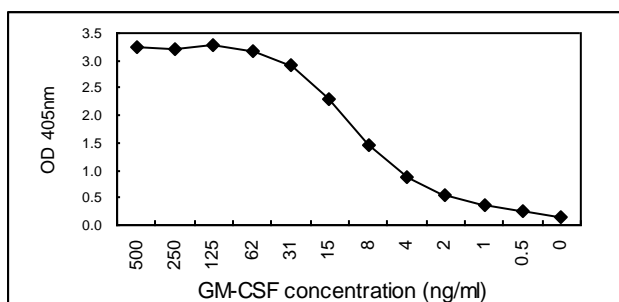


Figure 2. Sandwich ELISA using KT37 and KT35/HRP pairs

|   |  |
|---|--|
| <b>Suggested working concentrations</b> | Western blotting: 1/500 - 1/5000<br>Sandwich ELISA: 1/1000 - 1/4000  |
|   | Optimal concentrations should be determined by the end user  |
| <b>Preparation</b>                      | IgG is purified from culture supernatant through a Protein G column and labelled with horseradish peroxidase |
| <b>Store</b>                            | 4 °C for 1 month, -20 °C or -80°C in aliquots. Avoid repeated freeze/thaw cycles                             |
| <b>Safety information</b>               | This product contains thimerosal which is hazardous  |